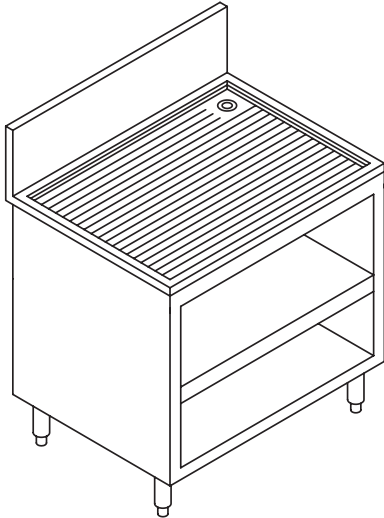


# VL SERIES



## TC-CBO MODELS

Drainboard Worktops Open Cabinet



PROJECT \_\_\_\_\_  
 ITEM NO. \_\_\_\_\_  
 QTY. \_\_\_\_\_  
 MODEL NO. \_\_\_\_\_

### "S" SERIES

	LINE	19 1/2" DEPTH	LENGTH
<input type="checkbox"/>	VL	STC-12-CBO	12"
<input type="checkbox"/>	VL	STC-18-CBO	18"
<input type="checkbox"/>	VL	STC-24-CBO	24"
<input type="checkbox"/>	VL	STC-30-CBO	30"
<input type="checkbox"/>	VL	STC-36-CBO	36"
<input type="checkbox"/>	VL	STC-42-CBO	42"
<input type="checkbox"/>	VL	STC-48-CBO	48"
<input type="checkbox"/>	VL	STC-54-CBO	54"
<input type="checkbox"/>	VL	STC-60-CBO	60"

### "D" SERIES

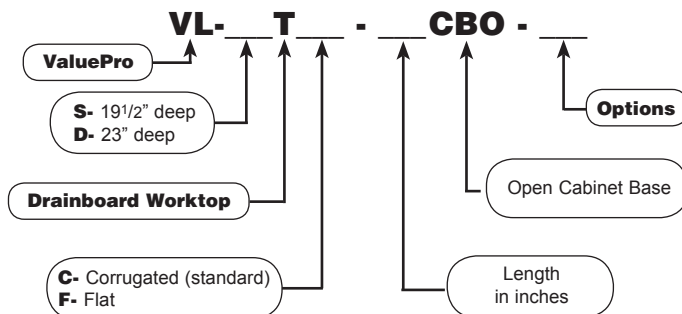
	LINE	23" DEPTH	LENGTH
<input type="checkbox"/>	VL	DTC-12-CBO	12"
<input type="checkbox"/>	VL	DTC-18-CBO	18"
<input type="checkbox"/>	VL	DTC-24-CBO	24"
<input type="checkbox"/>	VL	DTC-30-CBO	30"
<input type="checkbox"/>	VL	DTC-36-CBO	36"
<input type="checkbox"/>	VL	DTC-42-CBO	42"
<input type="checkbox"/>	VL	DTC-48-CBO	48"
<input type="checkbox"/>	VL	DTC-54-CBO	54"
<input type="checkbox"/>	VL	DTC-60-CBO	60"

### STANDARD FEATURES

- **ALL WELDED CONSTRUCTION** - fully welded, ground and polished to form one integral unit; no screws, pop-rivets or solder.
- **CORRUGATION** - 18 gauge #304 series stainless steel full-length continuous "WWW" corrugation pitches to 1" brass drain.
- **CBO** - Open cabinet base with intermediate and bottom shelves.
- **TOP** - 18 ga. #304 series, stainless steel.
- **FRONT** - 20 ga. #304 series, stainless steel.
- **BACK** 20 ga. #304 series, stainless steel.
- **BOTTOM** 20 ga. #304 series, stainless steel.
- **ENDS** 20 ga. #304 series, stainless steel.
- **BACKSPLASH** - 18 ga. #304 series, stainless steel.
- **LEG ASSEMBLIES** - 14 gauge s/s channels with 1-5/8" s/s tube legs and adjustable s/s bullet feet.

### Model Number Guide

Use this guide to create the model specific to your needs.



### OPTIONS

- M**----- customized

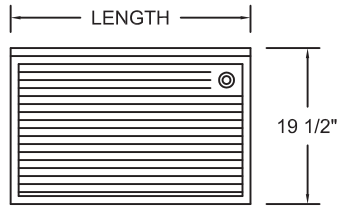


# VL SERIES

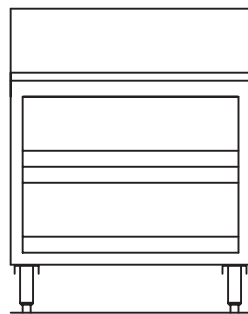


## TC-CBO MODELS

Drainboard Worktops Open Cabinet

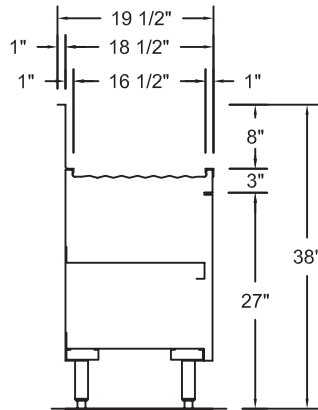


**PLAN**

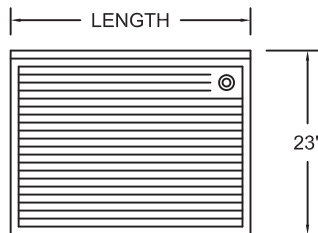


**ELEVATION**

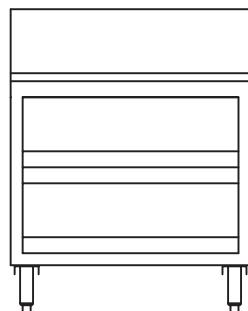
### “S” SERIES 19-1/2” DEEP



**SECTION**

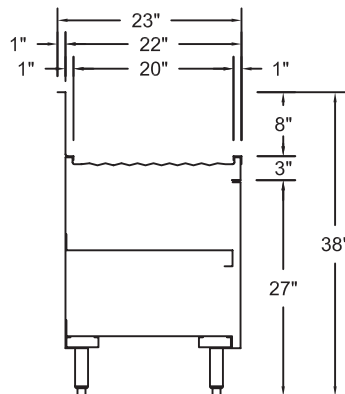


**PLAN**



**ELEVATION**

### “D” SERIES 23” DEEP



**SECTION**